

**“REU-V1616W” on page 2**  
**“REU-V2018W” on page 5**  
**“REU-V2020W” on page 8**

# REU-V1616W

Effective Date: 06/04/04

Supersedes: 05/04/04

No.	PART NAME	RA PART No.	11 DIGIT CODE	QTY
	OUTER CASE, White	92094275	014-387-000	
001	PANEL ASSY, Fr	92093590	019-1967000	1
002	BRACKET, Wall Mount.		106-329-000	2
003	SEAL, Fr. Panel		580-0039000	3
004	PLUG		510-893-000	1
005	GROMMET, Cable	92073352	106-104-000	1
006	GASKET, Cable		580-0105000	1
100	CONNECTION, R3/4 Gas	92081587	106-290-000	1
101	SCREW, TP. Seal	90195157	501-275-005	2
102	CONTROL, Gas	92093608	120-162-000	1
103	MANIFOLD 'A' Assy (Prop.)	92093624	101-592-000	1
103	MANIFOLD 'B' Assy (NG)	92093632	101-593-000	1
104	GASKET, Manif. Upr		580-0106000	1
105	GASKET, Manif. Lwr		580-0107000	1
107	BURNER CASE, Fr		098-0624000	1
108	GASKET, Burner		580-589-000	1
109	DAMPER		140-722-000	1
110	BURNER ASSY		157-083-000	14
111	BURNER CASE, Rr		098-402-000	1
112	FRONT PLATE, Comb. Cmbr		019-715-000	1
113	SEALING UPPER, Comb.Cmbr		580-591-000	1
114	ELECTRODE	92086974	202-156-000	1
115	ELECTRODE, FR	92093640	230-057-000	1
116	GASKET, Electrode	92086990	580-507-000	1
117	HOLDER, Electrode	92087006	580-505-000	1
118	SLEEVE, Electrode	92087030	518-035-000	1
125	HEAT EXCH. Assy	92093657	314-538-000	1
127	BRACKET A		538-615-000	1
128	BRACKET B		537-502-000	1
130	TERMINAL, Flue		055-787-000	1
131	GASKET, Flue Term		580-593-000	1
132	PACKING, Flue Term		580-594-000	1

**REU-V1616W**

Effective Date: 06/04/04

Supercedes: 05/04/04

No.	PART NAME	RA PART No.	11 DIGIT CODE	QTY
150	FAN MOTOR, Assy	92093665	222-512-000	1
151	FAN CASING, Assy		035-870-000	1
400	CONNECTION 1/2, In. Water		333-300-000	1
401	STRAP, Plug		553-119-000	1
402	FILTER, Inlet Water	92083773	017-268-000	1
403	FILTER, Plug		196-031-000	1
404	RECTIFIER		330-107-000	1
405	SERVO, Water Flow	92093673	301-100-000	1
406	COVER, Water Flow Sy.		098-0781000	1
407	CONNECTION, 1/2 HW		333-303-000	1
408	STRAP, Plug		553-043-000	1
409	DRAIN VALVE, Assy	92081751	337-048-000	1
700	PCB, Assy	92093681	210-604-000	1
701	COVER-A, EC		098-0782000	1
702	COVER, EC		098-0627000	1
703	SPARKER	92072776	261-015-000	1
704	LEAD, High Tension	92092253	203-828-000	1
705	MR SENSOR, Assy	92092279	243-072-000	1
706	EMC BOARD, Assy	92093699	210-605-000	1
707	COVER, EMC Board		098-0784000	1
708	CLIP		504-058-000	1
709	TRANSFOMER, Assy	92093616	224-332-000	1
710	HARNESS, Solenoid Valve		290-0488000	1
711	HARNESS, Sensor		290-0643000	1
712	HARNESS, Breaker		290-0644000	1
713	HARNESS, Thermal Fuse		290-0491000	1
714	HOLDER, Thermal Fuse		537-505-000	2
715	HOLDER, Thermal Fuse		537-0110000	2
716	VALVE HEATER		213-001-000	1
717	BRACKET, Heater	92076123	537-174-000	4
718	SENSOR SWITCH, Low Temp		234-444-000	1
719	THERMISTOR, Inlet	92073675	233-108-000	1
720	ELECTRICAL CORD	92089051	206-226-000	1

**REU-V1616W**

Effective Date: 06/04/04

Supercedes: 05/04/04

No.	PART NAME	RA PART No.	11 DIGIT CODE	QTY
721	HARNESS, Fuse		290-0645000	
721	HARNESS, Fuse	92094002	290-0646000	1
801	SCREW		501-865-000	2
802	SCREW		501-827-000	2
803	SCREW		501-856-000	3
804	SCREW		501-889-000	1
805	SCREW		501-400-000	3
806	SCREW		501-296-000	2
807	SCREW		501-737-000	1
808	SCREW		501-295-000	1
820	O-RING	90195165	520-300-010	2
821	O-RING	92072859	520-043-010	1
822	WASHER		580-180-000	2
825	O-RING	92062249	520-209-010	1
826	O-RING	92062348	520-281-010	1
827	O-RING	92072800	520-255-010	1
828	O-RING	92062207	520-193-010	1
829	O-RING	92062199	520-048-010	1
830	O-RING	92071182	520-049-010	1
888	CUSTOMER INSTRUCTIONS		623-912-100	1
889	INSTALLATION INSTRUCTIONS		K23-912-100	1

# REU-V2018W

Effective Date: 06/04/04

Supersedes: 05/04/04

No.	PART NAME	RA PART No.	11 DIGIT CODE	QTY
	OUTER CASE	92094275	014-387-000	1
001	PANEL Assy, Front	92093798	019-1971000	1
002	BRACKET, Wall Mount.		106-329-000	2
003	PANEL, Fr		580-0039000	3
004	PLUG		510-893-000	1
005	GROMMET, Cable	92073352	106-104-000	1
006	GASKET, Cable		580-0105000	1
100	CONNECTION, R3/4 Gas	92081587	106-290-000	1
101	SCREW, TP. Seal	90195157	501-275-005	2
102	CONTROL, Gas	92093608	120-162-000	1
103	MANIFOLD 'A' Assy (Prop.)	92093764	101-594-000	1
103	MANIFOLD 'B' Assy (NG)	92093814	101-595-000	1
104	GASKET, Manif. Upr		580-0108000	1
105	GASKET, Manif. Lwr		580-0109000	1
107	BURNER CASE, Fr		098-0625000	1
108	GASKET, Burner		580-590-000	1
109	DAMPER		140-723-000	1
111	BURNER CASE, Rr		098-403-000	1
112	FRONT PLATE, Comb. Cmbr		019-1676000	1
113	SEALING UPPER, Comb.Cmbr		580-596-000	1
114	ELECTRODE	92086974	202-156-000	1
115	ELECTRODE, FR	92093640	230-057-000	1
116	GASKET, Electrode	92086990	580-507-000	1
117	HOLDER, Electrode	92087006	580-505-000	1
118	SLEEVE, Electrode	92087030	518-035-000	1
125	HEAT EXCH. Assy	92093822	314-539-000	1
127	BRACKET A		538-615-000	1
128	BRACKET B		537-502-000	1
130	TERMINAL, Flue		055-788-000	1
131	GASKET, Flue Term		580-592-000	1
132	PACKING, Flue Term		580-600-000	1

**REU-V2018W**

Effective Date: 06/04/04

Supercedes: 05/04/04

No.	PART NAME	RA PART No.	11 DIGIT CODE	QTY
150	FAN MOTOR, Assy	92093665	222-512-000	1
151	FAN CASING, Assy		035-870-000	1
400	CONNECTION 1/2, In. Water		333-300-000	1
401	STRAP, Plug		553-119-000	1
402	FILTER, Inlet Water	92083773	017-268-000	1
403	FILTER, Plug		196-031-000	1
404	RECTIFIER		330-107-000	1
405	SERVO, Water Flow	92093673	301-100-000	1
405	SERVO, Water Flow		301-043-000	1
406	COVER, Water Flow Sy.		098-0781000	1
407	CONNECTION, 1/2 HW		333-303-000	1
408	STRAP, Plug		553-043-000	1
409	DRAIN VALVE, Assy	92081751	337-048-000	1
700	PCB, Assy	92093681	210-604-000	1
701	COVER-A, EC		098-0782000	1
702	COVER, EC		098-0627000	1
703	SPARKER	92072776	261-015-000	1
704	LEAD, High Tension	92092253	203-828-000	1
705	MR SENSOR, Assy	92092279	243-072-000	1
706	SURGE ARRESTOR	92093699	210-605-000	1
707	COVER, EMC Board		098-0784000	1
708	CLIP		504-058-000	1
709	TRANSFOMER, Assy	92093616	224-332-000	1
710	HARNESS, Solenoid Valve		290-0488000	1
711	HARNESS, Sensor		290-0643000	1
712	HARNESS, Breaker		290-0644000	1
713	HARNESS, Thermal Fuse		290-0492000	1
714	HOLDER, Thermal Fuse		537-505-000	2
715	HOLDER, Thermal Fuse		537-0110000	2

**REU-V2018W**

Effective Date: 06/04/04

Supercedes: 05/04/04

No.	PART NAME	RA PART No.	11 DIGIT CODE	QTY
716	VALVE HEATER		213-001-000	1
717	BRACKET, Heater	92076123	537-174-000	1
718	SENSOR SWITCH, Low Temp		234-444-000	1
719	THERMISTOR, Inlet	92073675	233-108-000	1
720	ELECTRICAL CORD	92089051	206-226-000	1
721	HARNESS, Fuse		290-0645000	1
721	HARNESS, Fuse	92094002	290-0646000	1
801	SCREW		501-865-000	2
802	SCREW		501-827-000	2
803	SCREW		501-856-000	3
804	SCREW		501-889-000	1
805	SCREW		501-400-000	3
806	SCREW		501-296-000	2
807	SCREW		501-737-000	1
808	SCREW		501-295-000	1
820	O-RING	90195165	520-300-010	2
821	O-RING	92072859	520-043-010	1
822	WASHER		580-180-000	2
825	O-RING	92062249	520-209-010	1
826	O-RING	92062348	520-281-010	1
827	O-RING	92072800	520-255-010	1
828	O-RING	92062207	520-193-010	1
829	O-RING	92062199	520-048-010	1
830	O-RING	92071182	520-049-010	1
888	CUSTOMER INSTRUCTIONS		623-912-100	1
889	INSTALLATION INSTRUCTIONS		K23-912-100	1

**REU-V2020W**

Effective Date: 06/04/04

Supercedes: 05/04/04

No.	PART NAME	RA PART No.	11 DIGIT CODE	QTY
	OUTER CASE	92094275	014-387-000	1
001	PANEL FRONT	92093756	019-1969000	1
002	BRACKET, Wall Mount.		106-329-000	2
003	PANEL, Fr		580-0039000	3
004	PLUG		510-893-000	1
005	GROMMET, Cable	92073352	106-104-000	1
006	GASKET, Cable		580-0105000	1
100	CONNECTION, R3/4 Gas	92081587	106-290-000	1
101	SCREW, TP. Seal	90195157	501-275-005	2
102	CONTROL, Gas	92093608	120-162-000	1
103	MANIFOLD 'A' Assy (Prop.)	92093764	101-594-000	1
103	MANIFOLD 'B' Assy (NG)	92093814	101-595-000	1
104	GASKET, Manif. Upr		580-0108000	1
105	GASKET, Manif. Lwr		580-0109000	1
107	BURNER CASE, Fr		098-0625000	1
108	GASKET, Burner		580-590-000	1
109	DAMPER		140-723-000	1
111	BURNER CASE, Rr		098-403-000	1
112	FRONT PLATE, Comb. Cmbr		019-1676000	1
113	SEALING UPPER, Comb.Cmbr		580-596-000	1
114	ELECTRODE	92086974	202-156-000	1
115	ELECTRODE, FR	92093640	230-057-000	1
116	GASKET, Electrode	92086990	580-507-000	1
117	HOLDER, Electrode	92087006	580-505-000	1
118	SLEEVE, Electrode	92087030	518-035-000	1
125	HEAT EXCH. Assy	92093822	314-539-000	1
127	BRACKET A		538-615-000	1
128	BRACKET B		537-502-000	1
130	TERMINAL, Flue		055-788-000	1
131	GASKET, Flue Term		580-592-000	1
132	PACKING, Flue Term		580-600-000	1
150	FAN MOTOR, Assy	92093665	222-512-000	1
151	FAN CASING, Assy		035-870-000	1



# REU-V2020W

Effective Date: 06/04/04

Supersedes: 05/04/04

No.	PART NAME	RA PART No.	11 DIGIT CODE	QTY
400	CONNECTION 1/2, In. Water		333-300-000	1
401	STRAP, Plug		553-119-000	1
402	FILTER, Inlet Water	92083773	017-268-000	1
403	FILTER, Plug		196-031-000	1
404	RECTIFIER		330-107-000	1
405	SERVO, Water Flow	92093673	301-100-000	1
406	COVER, Water Flow Sy.		098-0781000	1
407	CONNECTION, 1/2 HW		333-303-000	1
408	STRAP, Plug		553-043-000	1
409	DRAIN VALVE, Assy	92081751	337-048-000	1
700	PCB, Assy	92093681	210-604-000	1
701	COVER-A, EC		098-0782000	1
702	COVER, EC		098-0627000	1
703	SPARKER	92072776	261-015-000	1
704	LEAD, High Tension	92092253	203-828-000	1
705	MR SENSOR, Assy	92092279	243-072-000	1
706	EMC BOARD, Assy	92093699	210-605-000	1
707	COVER, EMC Board		098-0784000	1
708	CLIP		504-058-000	1
709	TRANSFOMER, Assy	92093616	224-332-000	1
710	HARNESS, Solenoid Valve		290-0488000	1
711	HARNESS, Sensor		290-0643000	1
712	HARNESS, Breaker		290-0644000	1
713	HARNESS, Thermal Fuse		290-0492000	1
714	HOLDER, Thermal Fuse		537-505-000	2
715	HOLDER, Thermal Fuse		537-0110000	2
716	VALVE HEATER		213-001-000	1
717	BRACKET, Heater	92076123	537-174-000	4
718	SENSOR SWITCH, Low Temp		234-444-000	1
719	THERMISTOR, Inlet	92073675	233-108-000	1
720	ELECTRICAL CORD	92089051	206-226-000	1
721	HARNESS, Fuse		290-0645000	
721	HARNESS, Fuse	92094002	290-0646000	1

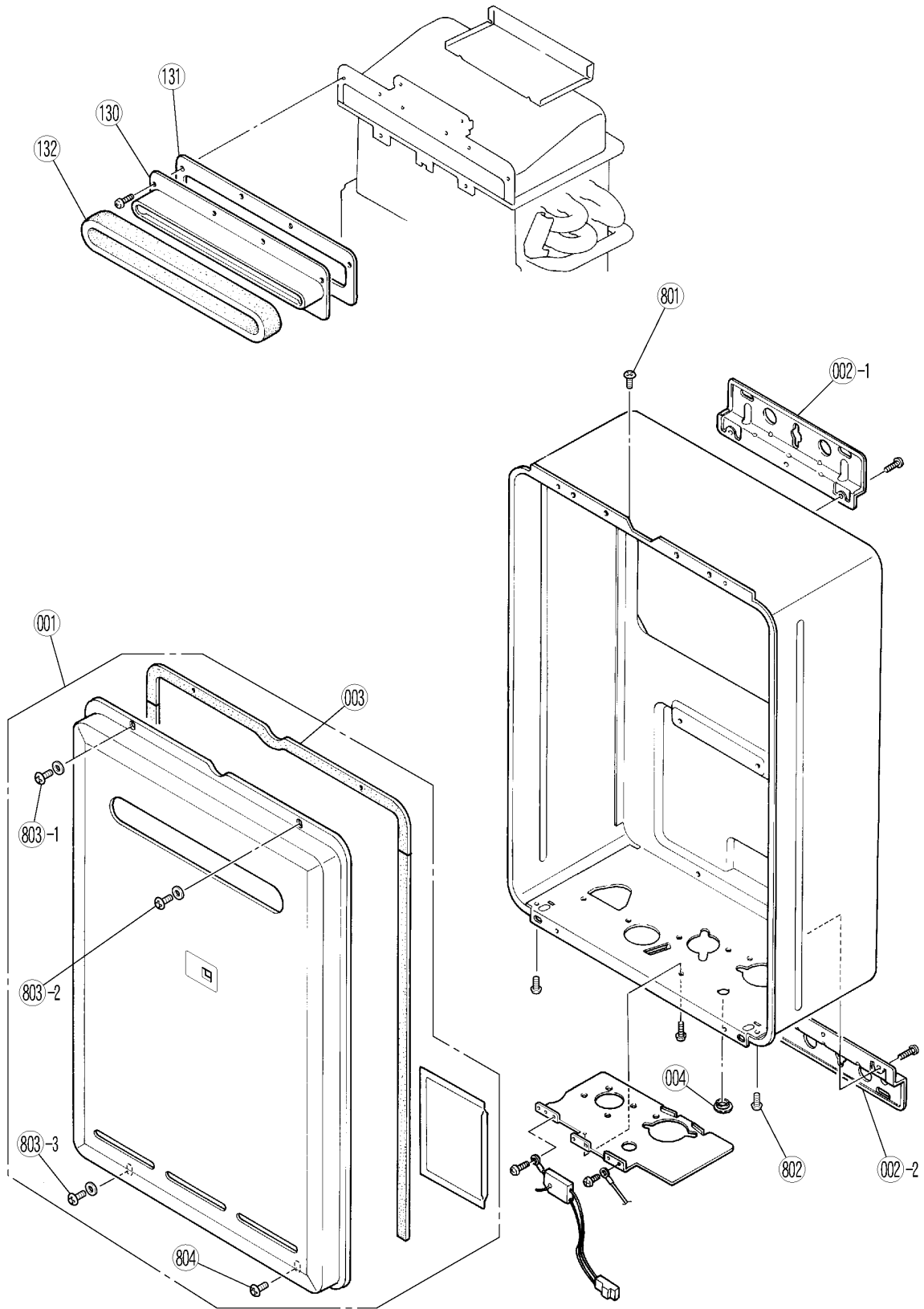
**REU-V2020W**

Effective Date: 06/04/04

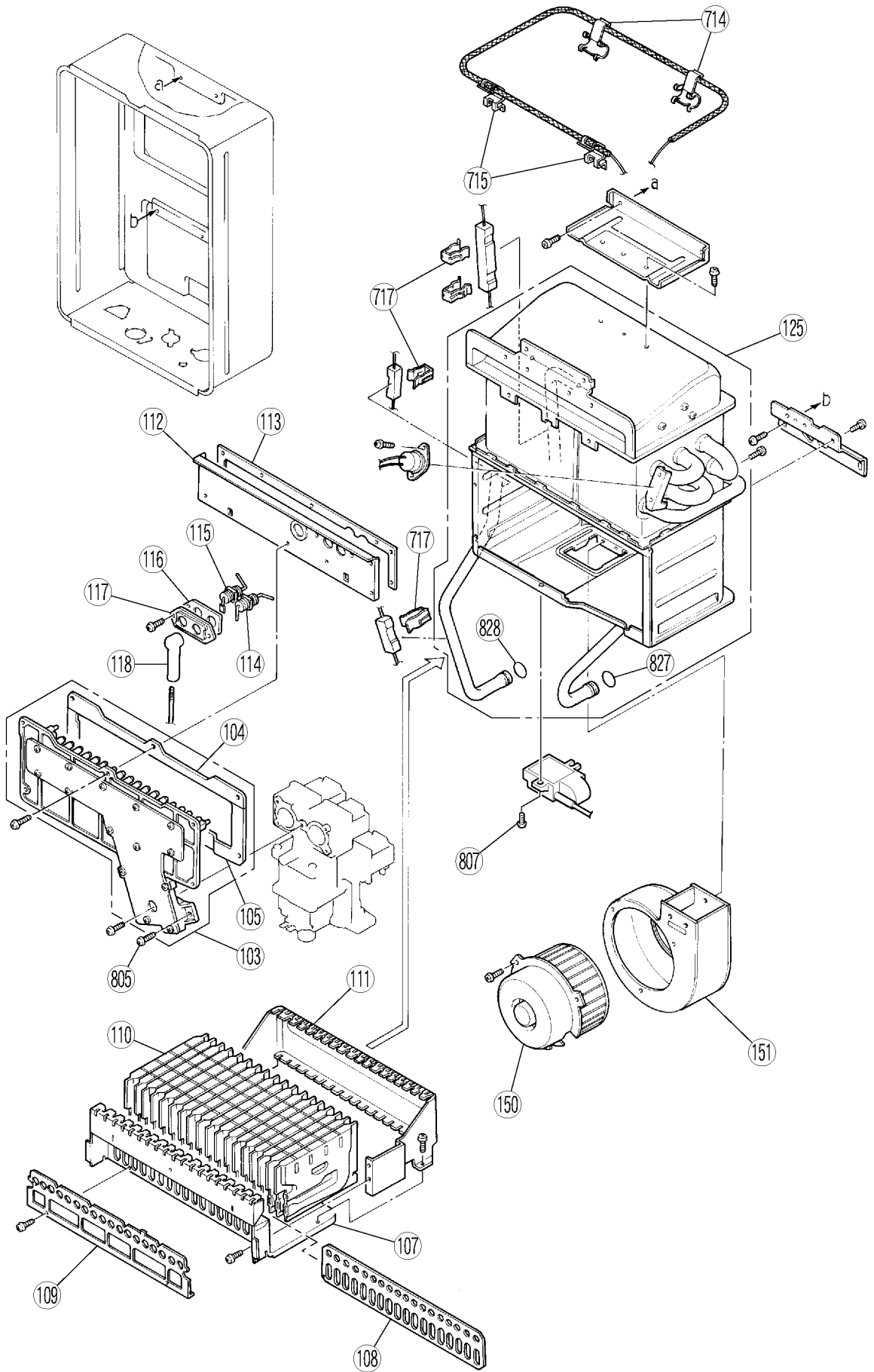
Supercedes: 05/04/04

No.	PART NAME	RA PART No.	11 DIGIT CODE	QTY
801	SCREW		501-865-000	2
802	SCREW		501-827-000	2
803	SCREW		501-856-000	3
804	SCREW		501-889-000	1
805	SCREW		501-400-000	3
806	SCREW		501-296-000	2
807	SCREW		501-737-000	1
808	SCREW		501-295-000	1
820	O-RING	90195165	520-300-010	2
821	O-RING	92072859	520-043-010	1
822	WASHER		580-180-000	2
825	O-RING	92062249	520-209-010	1
826	O-RING	92062348	520-281-010	1
827	O-RING	92072800	520-255-010	1
828	O-RING	92062207	520-193-010	1
829	O-RING	92062199	520-048-010	1
830	O-RING	92071182	520-049-010	1
888	CUSTOMER INSTRUCTIONS		623-912-100	1
889	INSTALLATION INSTRUCTIONS		K23-912-100	1

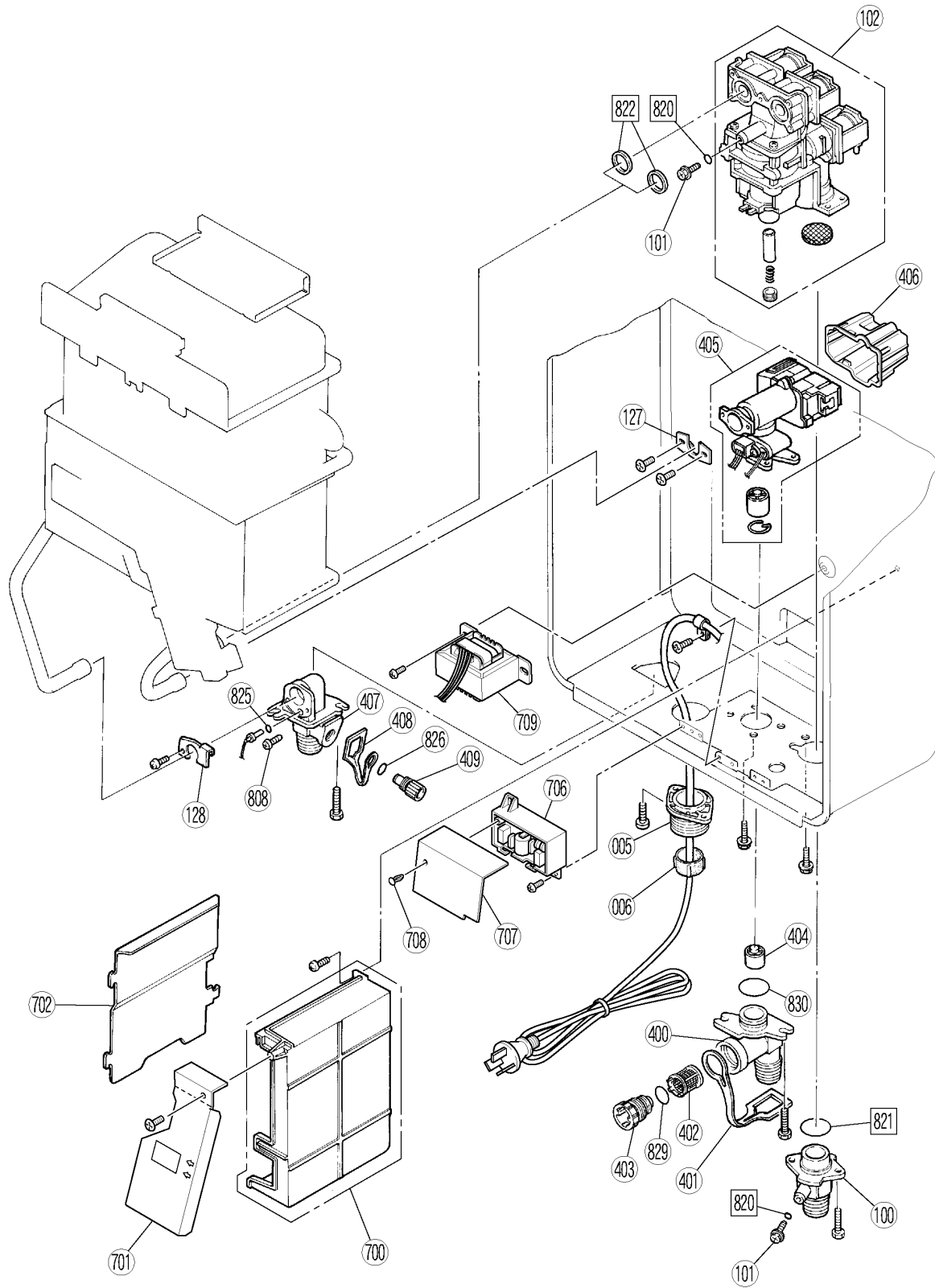
# REU-V1616W / REU-V2018W / REU-V2020W



# REU-V1616W / REU-V2018W / REU-V2020W



# REU-V1616W / REU-V2018W / REU-V2020W



# REU-V1616W / REU-V2018W / REU-V2020W

