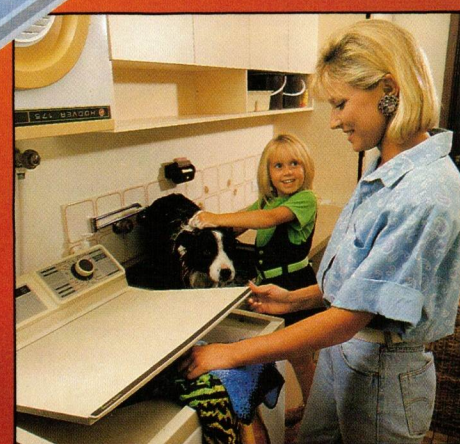
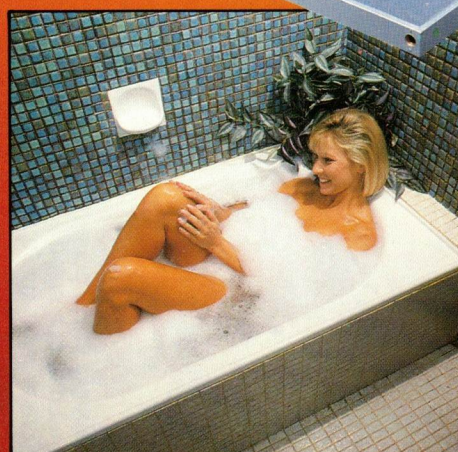
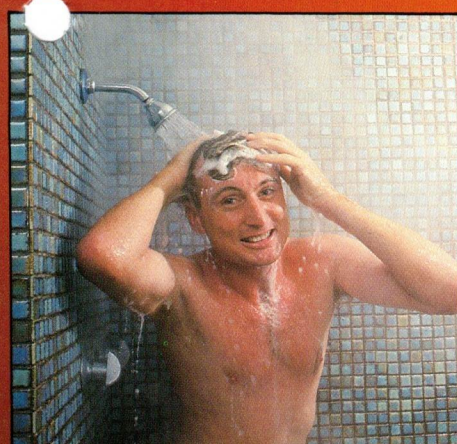
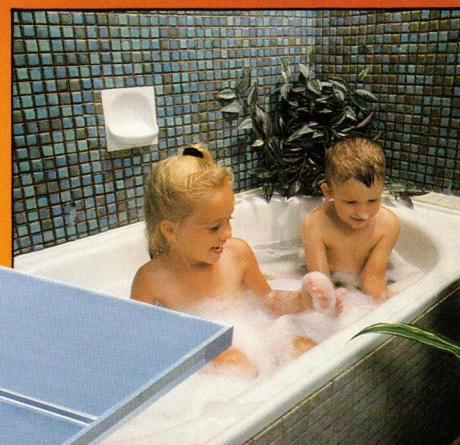
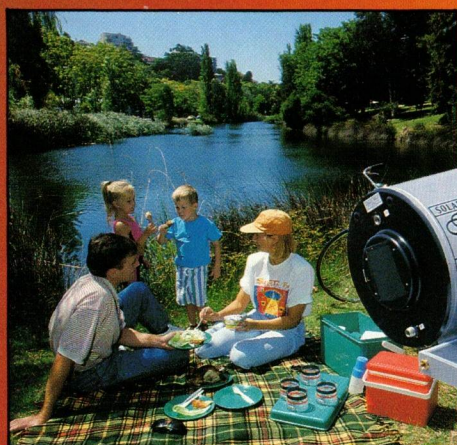
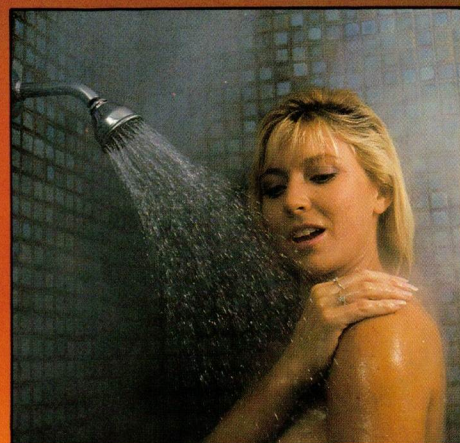
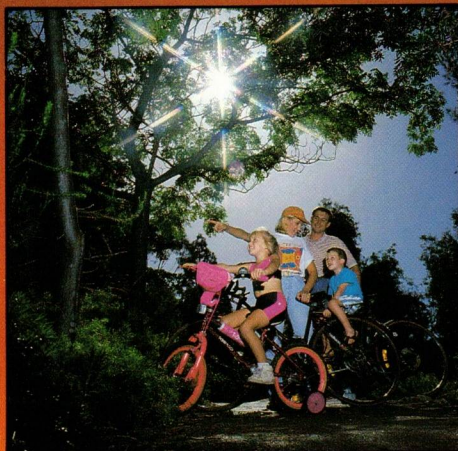
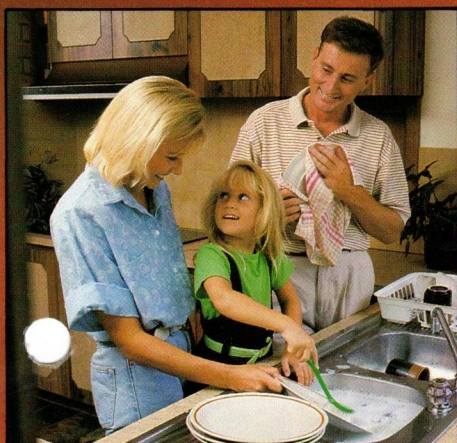


GET SOLAR INTO YOUR LIFE TODAY!

SAVE ON POWER COSTS

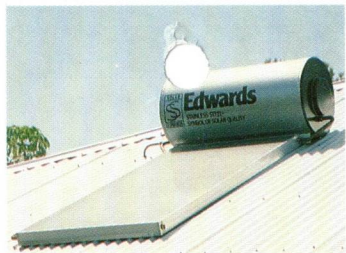
SAVE THE ENVIRONMENT



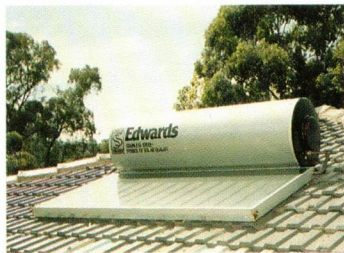
EDWARDS ENERGY SYSTEMS PTY LTD

A.C.N. 009 459 938





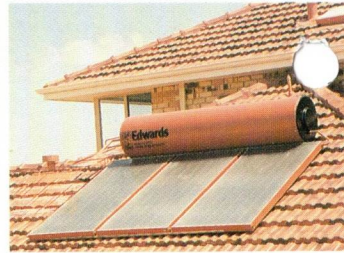
L180



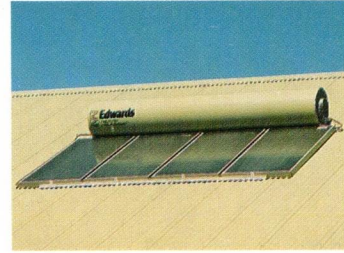
L305H



L305



L440



L600



L305 SIDE PITCH FRAME

Marine Grade 316 Stainless Steel Storage Cylinder, a natural barrier to corrosion both inside and outside, does not require artificial means such as sacrificial anodes and glass/vitreous linings to protect it from rusting.

Hot water outlet and pressure/temperature relief valve socket (700kPa/99°C)

Adjustable thermostat to ensure electric boosting is not done to the exclusion of the solar energy. Automatic cut out at desired temperature.

Cold water entry (450kPa maximum supply pressure) with special distributor to maximise available hot water in the cylinder.

Electric booster to top up with hot water on the odd occasion solar is not quite adequate.

Tough, weatherproof yet attractive *Colorbond® outer casing

Tough, weatherproof yet attractive *Colorbond® outer casing available in a range of colours to suit your home.

High quality polyurethane foam insulation ensures maximum water temperature overnight so valuable solar contribution is not wasted.

Hot water return is positioned to maximise thermosyphon flow.

Double weather sealed glass to ensure panel protection.

Black painted surface to attract solar insolation into the collector plate to generate volumes of hot water.

SOLA KROME a unique high efficiency, high solar energy absorbing surface which guarantees maximum solar energy collection and hot water performance. This ensures the greatest reduction to boosting costs.

Copper tubes mechanically bonded to high performance SOLA KROME collector plate or standard black painted surface.

Tough Solar Glass for both safety and optimum panel performance as it allows maximum solar radiation to pass through it and onto the SOLA KROME panel surface.

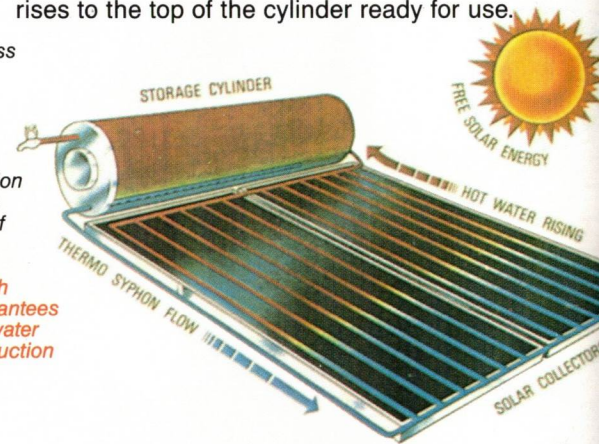
Clear float glass (annealed untoughened) to protect solar collector from weather and heat dissipation.

BLACK MAGIC – combination of ALL features shown in RED.

HOW IT WORKS

The solar water heater works on a natural convection phenomenon called 'Thermosyphon'. It does not rely upon pumps, motors, nor any moving parts, just nature's own characteristic that hot water rises while cold water falls.

The cold water falls from the bottom of the storage tank to the bottom of the solar panels where it is heated up by the solar energy. The water rises up the panel as it heats and returns to the tank where it rises to the top of the cylinder ready for use.



EDWARDS ENERGY SYSTEMS

A.C.N. 009 459 938

Part of The Edwards Group of Companies

Manufacturers and marketers of domestic and commercial and process heating systems - gas, electric, solar, oil and water.

SA HOT WATER
941 PORT ROAD
CHELTENHAM SA 5014
PHONE: 8244 4444

Australian Design Award 1989



STAINLESS STEEL SYMBOL OF SOLAR QUALITY

