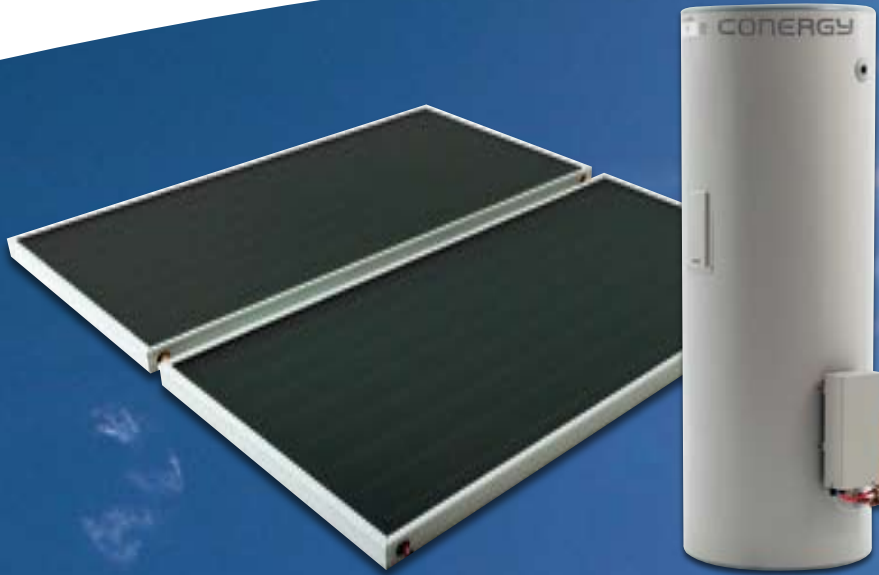


# Solar - The Smart Choice for Hot Water



CONERGY

## Conergy Split System – Open



### Why Solar?

The benefits of solar heating are well known – energy from the sun costs nothing, and you can obtain as much as 90% of your hot water requirements for free! And while you're reducing your power bill, you're helping the environment.

That's why the Conergy Split Systems are the smart choice, with the highest standards in water heating performance. Superior design, technology and materials ensure the very best in efficiency, slashing your heating costs while you enjoy steaming hot water, all year round.



### The Conergy Benefits

- | Up to 90% of your hot water for free from the sun
- | Speedy installation
- | Reduced weight and visual impact on roof
- | Hot water in all weather conditions
- | Save up to 3.4 tonnes of CO<sub>2</sub> emissions per year
- | Tank can be installed up to 20m from collectors
- | Generous rebates available to approved applicants
- | Long life in any environment
- | Extensive warranty options

### Conergy Split System – Open

This system consists of an open circuit solar water heater with roof mounted collector panels and a ground mounted hot water tank. The Open System is designed for frost-free areas. The water is circulated between tank and collectors by a small pump which is regulated by the Conergy Smart Solar Controller.

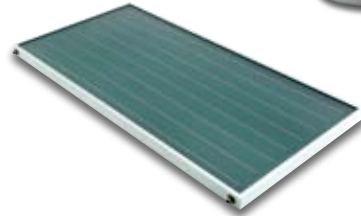
## Tanks

- Wide range of tank sizes (250, 315 and 400L)
- Vertical tank structure increases efficiency
- Vitreous enamel lined steel with sacrificial anode for long life even in hard water areas
- Durable Colorbond® weather proof casing
- Robust construction with high density thermal insulation



## Collectors

- Collector models for high and low solar radiation areas
- Toughened glass and durable copper waterway tubes
- EPDM rubber seals ensure durability and reliability in extreme climatic conditions
- Black chrome surface on copper substrate guarantees maximum efficiency (E20BC models)
- Solar lacquer surface guarantees maximum performance in high solar radiation areas (F20LC models)



## Our Model Range

Model	AS2504 E20BC Open	AS2504 E20SB Open	AS2504 F20LC Open	AS3154 E20BC Open	AS3154 E20SB Open	AS3154 F20LC Open	AS4006 E20BC Open	AS4006 E20SB Open	AS4006 F20LC Open
Tank capacity (L)	250	250	250	315	315	315	400	400	400
Boost capacity (L) (electric)	60	60	60	60	60	60	80	80	80
Boost capacity (L) (gas)	26 Litres/minute*								
Storage tank material	Vitreous enamel lined low carbon steel								
Storage tank insulation	High density polyurethane								
Tank weight, empty (kg)	88	88	88	103	103	103	114	114	114
Tank weight, full (kg)	347			427			530		
Tank size (Dia x height/mm)	617 x 1444			617 x 1754			705 x 1703		
Electric booster element rating (when installed as electric boosted model)	3.6 kW – 220/250 V (other kW sizes available)								
Electric booster element rating (when installed as electric boosted model)	200								
Collector model	E20BC	E20SB	F20LC	E20BC	E20SB	F20LC	E20BC	E20SB	F20LC
Number of collectors	2	2	2	2**	2**	2**	3	3	3
Collector size (H x W x D/mm)	2020 x 1080 x 80 (20BC, 20SB)					1938 x 1025 x 80 (20LC)			
Total collector area (m <sup>2</sup> )	4	4	3.96	4	4	3.96	6	6	5.94
Single collector weight	30 kg empty – 32 kg full (E20BC, E20SB)					40 kg empty – 42 kg full (F20LC)			
Collector case material	Aluminium	Aluminium	Zincalume	Aluminium	Aluminium	Zincalume	Aluminium	Aluminium	Zincalume
Electric supply voltage	220/250 V for storage tank and pump module								
Solar energy transfer medium	Solar Fluid								

## Product Features

- Roof mounted collectors transfer energy to tank on the ground
- Aesthetic design – low visual impact
- Electric boosting with all systems (gas option available)
- Electric boosting allows for heating of top 80 litres, leaving the rest for solar gain
- Flat and pitched roof mounting systems available
- Pump module consumption <28 watts
- Certified – Australian Standard 2712

\* Available in LPG and NG

\*\* Also available with 3 collectors

For solar hot water enquires contact your local distributor on 1300 724 516

For more information on Conergy products including solar electric and wind power, please visit us online: [www.conergy.com.au](http://www.conergy.com.au)

Subject to technical modifications without notice.  
2007 © Conergy



Available from your local distributor: