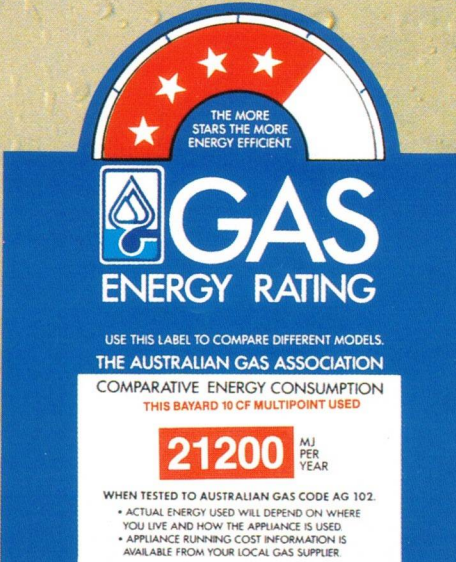
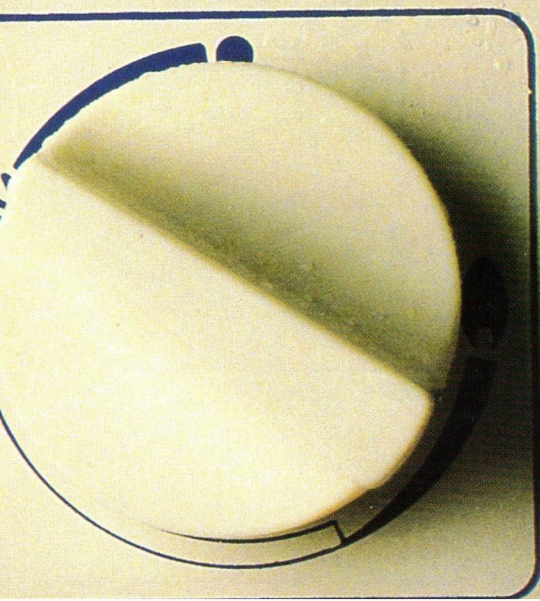



CHAFFOTEAUX ET MAURY GAS HOT WATER FOR AUSTRALIA



Chaffoteaux
et Maury



THE MORE
STARS THE MORE
ENERGY EFFICIENT

 **GAS**
ENERGY RATING

USE THIS LABEL TO COMPARE DIFFERENT MODELS.
THE AUSTRALIAN GAS ASSOCIATION
COMPARATIVE ENERGY CONSUMPTION
THIS BAYARD 10 CF MULTIPOINT USED

21200 MJ
PER
YEAR

WHEN TESTED TO AUSTRALIAN GAS CODE AG 102.
• ACTUAL ENERGY USED WILL DEPEND ON WHERE
YOU LIVE AND HOW THE APPLIANCE IS USED
• APPLIANCE RUNNING COST INFORMATION IS
AVAILABLE FROM YOUR LOCAL GAS SUPPLIER

Chaffoteaux et Maury GAS HOT WATER

Efficient

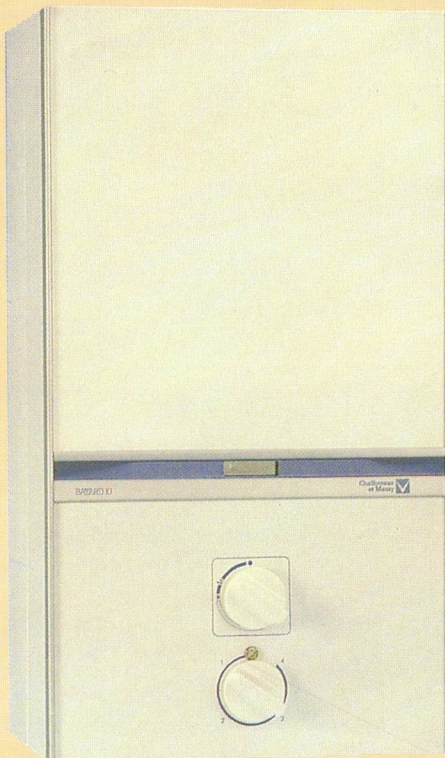
You get instant hot water in unlimited supply!
The variable heating power feature ensures constant water temperature whether you're using a lot or little.

Bayard 10BFE/13BFE

Open air installation. This is the answer when installation of a conventional water heater proves impossible. The 'suction cup' terminal is fitted directly to the front of the water heater so that it can be attached to an outside wall. The fully sealed housing provides protection against corrosion and the weather. It is particularly easy and economical to install.

Bayard 10BF (internal)

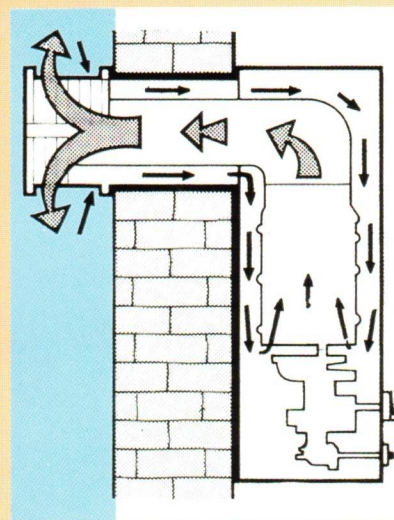
At last a balanced flue "under the sink" water heater for both new installations and as a replacement for the old Ascot.



\$\$ & energy saver

The main burner will only ignite while the hot water is actually running. The temperature control lets you set temperatures for different requirements.

Balanced flue



This unique water heater uses outside air and doesn't rob the room of oxygen. Its twin flow (admission/exhaust) sealed construction is connected to outside air through a "suction cup" terminal piece, fitted onto the outer face of the wall. There is no need for a conventional flue.

Technical Data

Heat Input

MODEL	MJ/H	MODEL	MJ/H
10CF	82	10BFE	72
13CF	105	13BFE	92
10BF	72		

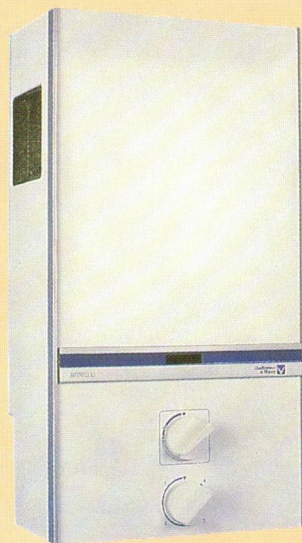
Dimensions

Model	Height	Width	Depth
10CF	623	323	220
13CF	623	373	220
10BF	610	330	253
10BFE	610	330	253
13BFE	655	400	310

Price and specifications may change without notice.

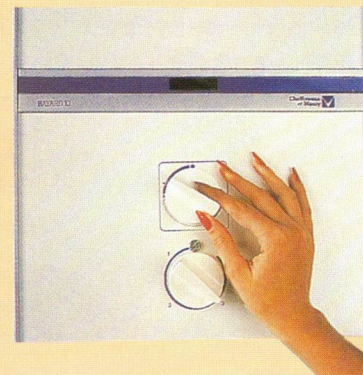
Bayard 13CF/10CF

A conventional flue model, heating 13 litres per minute (model 325) or heating 10 litres per minute (model 250).



Simple

There are just two controls, one ignites the pilot and maintains a variable gas flow. The other allows you to select the temperature.



Dealer:

SA HOT WATER
941 PORT ROAD
CHELTENHAM SA 5014
PHONE: 8244 4444

Distributors of
Chaffoteaux et Maury

